

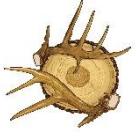
Ward Lake Hunting Club



**2015 – 2016
Deer Season Harvest Report
&
2016 – 2017
Deer Harvest Recommendations**



THE TIMBER-LAND AGENCY



THE TIMBER-LAND AGENCY

Ward Lake Hunting Club
2015 – 2016 Deer Season Harvest Report
&
2016 – 2017 Deer Harvest Recommendations

Following is the 2015 DMAP report for Ward Lake Hunting Club. The club did an excellent job on data collection for the 2015 – 2016 hunting season. Jawbones and harvest data were submitted for all deer except for two does. Good job!

The 2015 DMAP report includes:

1. Season narrative
2. Hunter observation data summary
3. Deer Herd Health Evaluation summary
4. Deer harvest recommendations
5. September 2016 camera survey top bucks
6. Appendix
 - a. Deer Herd Health Evaluation complete report
 - b. Hunter observation table and graph
 - c. Deer harvest data summary

2015 – 2016 Season Narrative

The deer hunting season on Ward Lake Hunting Club was closed during the entire month of January 2016 due to flooding of the Mississippi River. During the 2015 – 2016 hunting season, 21 bucks and 46 does were harvested on Ward Lake Hunting Club. An additional two bucks (shed 1.5 year olds) and 12 does were collected during a deer herd health check conducted on March 1 and 2, resulting in a total of **23 bucks and 56 does harvested/collected associated with the 2015 – 2016 season**. The doe harvest was the third highest in 10 years. The doe harvest recommendation was 50. The club has done a very good job following deer harvest recommendations. Continue the good work!

Two 4.5 year old and four 5.5 year old trophy bucks were harvested. The top three bucks scored 187 3/8" (5.5 years old), 172 1/4" (5.5 years old), and 155 4/8" (4.5 years old) gross. The club harvested 14 management bucks during the 2015 – 2016 season. The club should continue the aggressive harvest of management bucks to decrease the number of lower quality, mature bucks in the herd. Additionally, one 2.5 year old buck was harvested that should have been protected under the current management goal. Good job on the buck harvest overall!

During most of the 2015 summer and the 2016 winter, Ward Lake Hunting Club was flooded due to high waters of the Mississippi River. Flooding did cause some biological stress on the deer herd. Biological parameters that were affected the most were lactation rates and body weights. Lactation rates and hunter observations indicate lower fawn recruitment. However, the habitat and deer herd rebounded well since flood waters receded, and good rainfall during the spring and summer of 2016 has resulted in good quality vegetation going into the fall. The September 2016 camera survey indicates higher fawn recruitment for 2016.

Hunter Observation Data

Hunter observation data is somewhat biased for the 2015 – 2016 hunting season due to the deer season being closed during the entire month of January. Caution should be used when interpreting data. However, observation data, along with lower lactation rates, do indicate lower fawn recruitment for 2015. Historical observation data exhibit an increasing trend for the number of bucks seen per hour and the number of bucks with 8+ points seen per hour.

Habitat

During most of the 2015 summer and the 2016 winter, Ward Lake Hunting Club was flooded due to high waters of the Mississippi River. However, habitat and the deer herd rebounded well after flood waters receded, and good rainfall during the spring and summer of 2016 has resulted in good quality vegetation going into the fall.

Overall, timber management and supplemental plantings have been very good over the past several years on Ward Lake Hunting Club. Recent timber thinnings increased deer carrying capacity on the property. As a result, the supplemental planting program was adjusted based on current habitat conditions. The new supplemental plantings program includes alternating soybeans and wheat/oats along the sides of major roads, double cropping large interior food plots (soybeans and wheat/oats), planting wheat/oats in smaller interior food plots, and propagating perennial white clover on best sites based on historical production. “Checker board” planting has been discontinued along road sides.

Deer Herd Health Evaluation Summary (see complete HHE report in Appendix)

The 2016 herd health evaluation suggests that winter flooding of the Mississippi River did have a significant impact on body condition but not reproduction. However, holding the deer herd below habitat carrying capacity, recent habitat improvements (timber thinning) prior to flooding, and implementation of supplemental feeding after flooding appear to have minimized nutritional flood stress on the Ward Lake deer herd. Both body weight and KFI averages were lower for the site but were still significantly greater than the historical averages for the soil region. This was not the case on the adjoining Burke Hunting Club. The deer herd on Burke Hunting Club has not been held below carrying capacity and supplemental feeding was not implemented after the flood. Both body weight and KFI averages for Burke were significantly lower than the historical averages for the site and soil region.

Winter flooding of the Mississippi River did not have a significant effect on reproduction. The breeding season was short with a 32-day range and no fetal mortality was observed. Reproductive timing did shift seven days later but this did not affect the normal breeding range. Reproduction parameters continue to exceed those of the soil region.

Deer Harvest Recommendations for the 2016 – 2017 Hunting Season

Ward Lake Hunting Club should continue the aggressive harvest of management bucks, protect young quality bucks from harvest, and harvest an adequate number of does annually. A camera survey was conducted during September 2016 to determine buck harvest criteria for the 2016 – 2017 hunting season. The camera survey and personal observations indicate a very good fawn crop.

Following are deer harvest recommendations for the 2016 – 2017 hunting season:

- **50 Does**
- **Management Bucks**
 - Any 1.5 year old having spikes of 4” or less
 - 2.5 year old bucks having 6 mainframe points or less
 - 3.5 year old bucks with less than 8 mainframe points or scoring less than 115” gross B&C
 - 4.5 year old bucks with less than 8 mainframe points or scoring less than 125” gross B&C
 - 5.5 year old bucks with less than 8 mainframe points or scoring less than 140” gross B&C
- **Trophy Bucks**
 - 4.5 year old bucks having 8 mainframe points and scoring 125” gross B&C or more
 - 5.5+ year old bucks having 8 points or more and scoring 140” gross B&C or more

September 2016

Camera Survey

Top Bucks



9/12/2006 6:26 AM





9/21/2006 11:38 PM





Attack

9/19/2016 8:08 PM





Attack

9/11/2016 8:19 PM





9/11/2006 11:20 PM





Attack

9/19/2016 8:42 PM





9/16/2016

5:18 AM



9/14/2006 11:06 PM





9/21/2016 8:03 PM





9/19/2016 6:40 AM





9/16/2006 2:13 AM





2016 8:15 PM





7

9/22/2006 9:33 PM





9/12/2016

8:24 PM





9/23/2016 6:21 AM





9/15/2016 1:07 AM





Attack

9/15/2016 12:40 AM





Attack

9/23/2016 6:23 AM





Attack

9/23/2016 5:28 AM





9/12/2016 4:04 AM





9/12/2006 1:52 AM



Attack

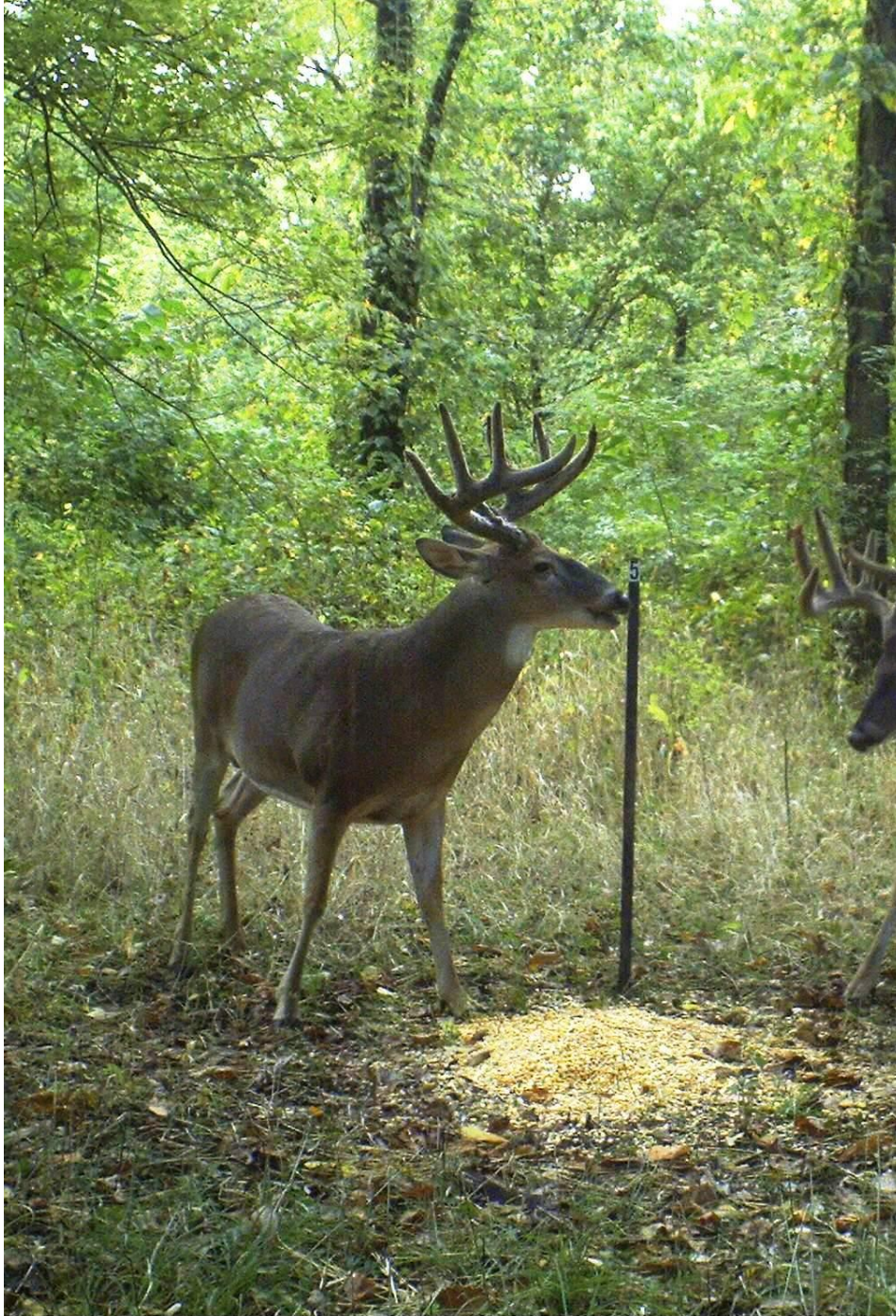
9/18/2016 7:36 PM





9/18/2006 2:38 AM





9/18/2006 6:19 PM



9/23/2006 4:58 AM





9/14/2006 5:37 AM



APPENDIX



White-tailed Deer Herd Health Evaluation Report

Ward Lake Hunting Club

Coahoma County

March 2016

Prepared by Chris McDonald



Introduction: A deer herd health evaluation was conducted on Ward Lake Hunting Club in the Batture soil region of Coahoma County on March 1 – 2, 2016, by the Mississippi Department of Wildlife, Fisheries, and Parks. A total of two does 1.5 years of age, eight does 2.5+ years of age, two 1.5 year old shed bucks were collected. The table below provides a comparison of the results of historical health check statistics collected by MDWFP on Ward Lake Hunting Club and for the Batture soil region.

Data for 2.5+ year old females

Site	Sample Size	Dressed weight - lbs	Conception Date	Parturition Date	Fetuses per doe	CLs per Doe	Kidney Fat Index - %
Batture Soil Region	692	92.3	Dec. 20	July 3	1.7	1.8	88.1
Ward Lake Historical	20	107.0	Dec. 10	June 24	1.9	2.0	143.0
Ward Lake 2016	8	104.4	Dec. 17	June 30	1.8	2.1	116.0

Results and Comparisons:

- Dressed weight was 97.2% of the historical value of the site, but 113.1% of the historical value for the soil region.
- The kidney fat index was 81.1% of historical value for the site and 131.6% of the historical soil region value.
- Reproductive timing was 7 days later than the historical average for the site, but three days earlier than the historical average for the soil region.
- The reproductive rate was high with 1.8 fetuses per doe, essentially the same as both the site and region averages.
- The reproductive potential was high with 2.1 CLs per doe, slightly greater than the historical average for the soil region but about the same as the site average.
- The breeding season was short with a 32-day range. Mean conception date was December 17. Conception dates ranged from November 23 to December 25. Conception dates for 1.5 year old does were December 6 and 17.

Summary and Recommendations:

Warmer-than-usual winter temperatures and an infusion of warm tropical moisture in late December 2015 created conditions for heavy, sustained rainfall across large sections of the central and southern United States, with many areas experiencing 12 inches of rain or more. Flash floods that are normally confined to smaller regions were spread throughout large portions of the central and eastern United States. Due to flooding of the Mississippi River during late December 2015 and January 2016, the 2015 – 2016 deer hunting season closed on December 29 and did not reopen.

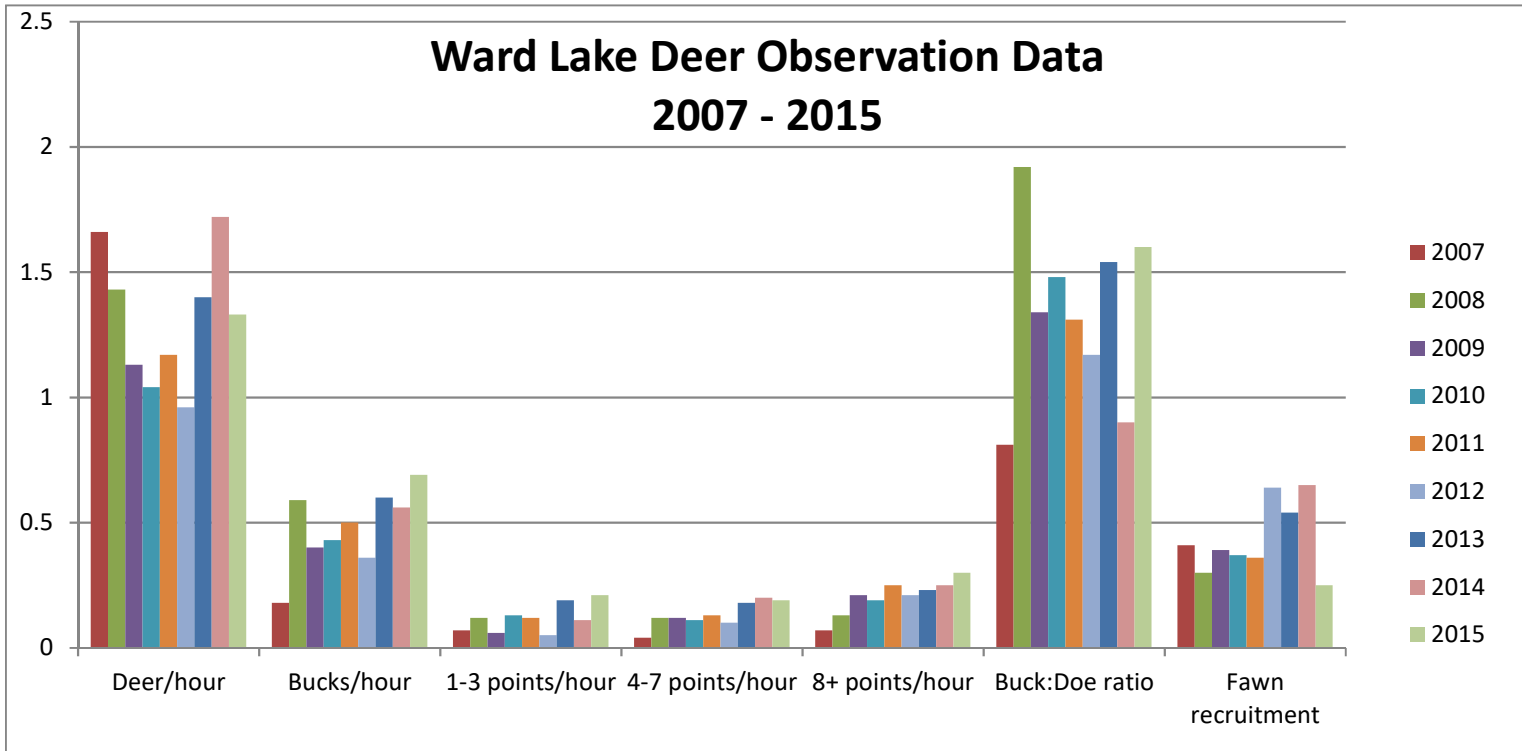
Nearly 100% of Ward Lake Hunting Club was flooded during this period. Once flood waters receded, a supplemental feeding program was implemented on the property using 25 feeders. A mixture of protein pellets and corn were provided ad libitum during February.

The 2016 herd health evaluation suggests that winter flooding of the Mississippi River did have a significant impact on body condition but not reproduction. However, holding the deer herd below habitat carrying capacity, recent habitat improvements (timber thinning) prior to flooding, and implementation of supplemental feeding after flooding appear to have minimized nutritional flood stress on the Ward Lake deer herd. Both body weight and KFI averages were lower for the site but were still significantly greater than the historical averages for the soil region. This was not the case on the adjoining Burke Hunting Club. The deer herd on Burke Hunting Club has not been held below carrying capacity and supplemental feeding was not implemented after the flood. Both body weight and KFI averages for Burke were significantly lower than the historical averages for the site and soil region.

Winter flooding of the Mississippi River did not have a significant effect on reproduction. The breeding season was short with a 32-day range and no fetal mortality was observed. Reproductive timing did shift seven days later but this did not affect the normal breeding range. Reproduction parameters continue to exceed those of the soil region.

Continued harvest of does, harvest of low quality, mature bucks, and protection of high quality young bucks are recommended. Continued proper timber management is recommended to supply abundant browse and hard mast.

Ward Lake Deer Observation Data									
	2007	2008	2009	2010	2011	2012	2013	2014	2015
Deer/hour	1.66	1.43	1.13	1.04	1.17	0.96	1.40	1.72	1.33
Bucks/hour	0.18	0.59	0.4	0.43	0.5	0.36	0.6	0.56	0.69
1-3 points/hour	0.07	0.12	0.06	0.13	0.12	0.05	0.19	0.11	0.21
4-7 points/hour	0.04	0.12	0.12	0.11	0.13	0.1	0.18	0.2	0.19
8+ points/hour	0.07	0.13	0.21	0.19	0.25	0.21	0.23	0.25	0.3
Buck:Doe ratio	0.81	1.92	1.34	1.48	1.31	1.17	1.54	0.9	1.6
Fawn recruitment	0.41	0.3	0.39	0.37	0.36	0.64	0.54	0.65	0.25
Total Observation Hours	1047	941	1064	1027	915	967	400.5	915	680



Harvest Summary v4

Date 10/6/2016

*** WARD LAKE ***

Club Number '1408'

2015 Season

County = Coahoma
Soil Region = Batture
State = MS

Biologist = Chris McDonald

Acres = 6489
Years on DMAP = 25
% Data Collected = 83.5

Table 1. Harvest Summary

	Number Harvested	Acres/ Deer Harvested
Bucks	23	282
Does	56	116
Totals	79	82

Table 2. Harvest History

	2015	2014	2013	2012	2011	2010	2009	2008	2007	2006	B 2014	Club Avg
Acres	6489	6489	6489	6489	6489	6489	6489	5400	5400	5400	276772	6162
Total Deer	79	90	87	93	47	71	61	37	58	58	6256	68
Bucks	23	24	27	43	13	25	22	11	17	12	2240	22
Does	56	66	60	50	34	46	39	26	41	46	4016	46
Acres/Deer	82	72	75	70	138	91	106	146	93	93	44	90
Bucks	282	270	240	151	499	260	295	491	318	450	124	284
Does	116	98	108	130	191	141	166	208	132	117	69	133

Table 3. Age Distribution

Age	Bucks		Does		Management Bucks		Criteria Bucks	
	Num	%	Num	%	Num	%	Num	%
0.5	0	0	3	7	0	0	0	0
1.5	5	24	17	38	5	36	0	0
2.5	6	29	14	31	5	36	1	14
3.5	3	14	7	16	3	21	0	0
4.5	3	14	2	4	1	7	2	29
5.5	4	19	1	2	0	0	4	57
6.5	0	0	0	0	0	0	0	0
7.5	0	0	0	0	0	0	0	0
8.5+	0	0	1	2	0	0	0	0
Totals	21		45		14		7	

Harvest Summary v4

Date 10/6/2016

*** WARD LAKE ***

Club Number '1408'

Table 4. Statistics for Doe Harvest

Age	Number Harvested	Average Live Weight	Percent Lactating
0.5	3	75	0
1.5	17	106	0
2.5	14	124	23
3.5	7	131	29
4.5	2	133	50
5.5	1	125	0
6.5	0	0	0
7.5	0	0	0
8.5+	1	125	0
Totals	45	115	

Table 5. Doe Harvest History

	2015	2014	2013	2012	2011	2010	2009	2008	2007	2006	B 2014	Club Avg
Does	45	65	48	50	34	46	39	26	40	46	4016	44
Acres/Doe	144	100	135	130	191	141	166	208	135	117	69	140
Doe Age-Wgt												
% 0.5	7	5	12	12	6	7	15	15	12	22	6	11
% 1.5	38	28	25	14	26	20	26	31	22	11	19	24
% 2.5	31	37	27	28	15	11	31	12	18	15	32	24
% 3.5+	24	31	35	46	53	63	28	42	48	52	48	42
Wght 0.5	75	72	75	72	68	54	61	65	77	68	66	69
Wght 1.5	106	113	112	116	118	99	114	121	108	109	98	111
Wght 2.5	124	122	124	128	127	112	124	125	126	127	113	124
Wght 3.5+	130	131	133	131	138	121	133	141	126	135	120	131
% Lactation												
1.5	0	0	9	14	0	0	0	0	33	20	10	6
2.5	23	54	46	64	75	20	75	100	100	43	56	56
2.5+	25	61	59	70	64	47	68	57	81	48	65	58
3.5+	27	70	69	74	61	52	60	45	74	50	71	60

Harvest Summary v4

Date 10/6/2016

*** WARD LAKE ***

Club Number '1408'

Table 6. Statistics for Yearling Bucks

	Number	Percent	Avg. Live Weight	Average Points
Spikes	5	100	118	2.0
Forks	0	0	0	0.0
Totals	5			

Table 7. Buck Statistics

Age	Live Weight		Points		Base		Length		Spread	
	Num	Avg	Num	Avg	Num	Avg	Num	Avg	Num	Avg
0.5	0	0	0	0.0	0	0.0	0	0	0	0.0
1.5	5	118	5	2.0	5	0.0	5	3.1	5	0.0
2.5	6	173	6	6.2	6	3.4	6	16.9	6	14.4
3.5	3	217	3	7.7	3	4.2	3	22.1	3	19.6
4.5	3	210	3	9.7	3	4.7	3	21.9	3	18.2
5.5	4	222	4	12.3	4	5.2	4	23.6	4	17.8
6.5	0	0	0	0.0	0	0.0	0	0	0	0.0
7.5	0	0	0	0.0	0	0.0	0	0	0	0.0
8.5+	0	0	0	0.0	0	0.0	0	0	0	0.0

Harvest Summary v4

Date 10/6/2016

*** WARD LAKE ***

Club Number '1408'

Table 8. Buck Harvest History (All Bucks)

	2015	2014	2013	2012	2011	2010	2009	2008	2007	2006	B 2014	Club Avg
Bucks	21	24	25	43	13	25	20	11	17	12	2240	21
Acres/Buck	309	270	260	151	499	260	324	491	318	450	124	292
% .5 Bucks	0	29	12	9	15	12	5	9	29	0	4.42	12.32
# .5 Bucks	0	7	3	4	2	3	1	1	5	0	99	2.6
Avg Weight	0	80	68	71	90	72	90	80	68	0	68	75
% 1.5 Bucks	24	12	8	16	0	8	5	27	0	33	5	12.8
# 1.5 Bucks	5	3	2	7	0	2	1	3	0	4	102	2.7
% Spikes	100	33	100	29	0	100	100	100	0	100	91	74
Avg Weight	118	147	131	143	0	115	125	127	0	128	109	131
Avg Points	2.0	4.3	2.0	4.7	0.0	2.0	2.0	2.0	0.0	1.8	2	3
Avg Base	0.0	2.8	1.4	2.8	0.0	0.0	0.0	0.0	0.0	2.3	2.0	2.5
Avg Length	3.1	9.8	3	10.2	0	0	0	9.4	0	8.2	5.1	7.2
Avg Spread	0.0	10.2	3.9	8.5	0.0	0.0	0.0	0.0	0.0	0.0	5.7	8.4
% 2.5 Bucks	29	12	20	30	8	4	30	0	6	17	9	18
# 2.5 Bucks	6	3	5	13	1	1	6	0	1	2	198	3.8
Avg Weight	173	193	172	178	175	155	164	0	190	155	165	174
Avg Points	6.2	7.0	7.0	6.7	8.0	9.0	6.7	0.0	8.0	7.5	7	7
Avg Base	3.4	3.7	3.8	3.3	3.3	3.8	3.7	0.0	5.1	2.9	3.5	3.5
Avg Length	16.9	17.9	16.3	17.1	15.9	16.4	16.8	0	23.7	18.3	16.3	17.2
Avg Spread	14.4	14.3	13.8	14.7	11.8	13.3	13.6	0.0	14.5	13.4	13.3	14.2
% 3.5 Bucks	14	17	36	35	38	36	45	36	35	17	22.6	31
# 3.5 Bucks	3	4	9	15	5	9	9	4	6	2	507	7
Avg Weight	217	189	204	205	193	187	212	206	200	208	184	202
Avg Points	7.7	7.3	7.8	8.1	8.4	8.6	9.1	10.5	9.7	7.5	8	8
Avg Base	4.2	4.1	4.3	4.3	4.4	4.1	4.9	4.8	4.3	4.4	4.1	4.4
Avg Length	22.1	19.4	19.6	20.8	20.6	21	20.8	21.6	23.1	23.5	18.7	21.0
Avg Spread	19.6	14.8	15.8	16.1	16.6	15.8	15.6	18.7	16.6	15.6	15.2	16.2
% 4.5+ Bucks	33	29	24	9	38	40	15	27	29	33	63	25.6
# 4.5+ Bucks	7	7	6	4	5	10	3	3	5	4	1401	5.4
Avg Weight	216	204	225	224	216	191	175	182	202	204	197	204
Avg Points	11.1	7.1	8.7	8.0	10.2	9.4	8.7	9.0	9.6	7.3	8	9
Avg Base	5.0	4.4	4.4	5.0	4.6	4.4	4.4	4.7	4.5	4.6	4.5	4.6
Avg Length	22.9	20.6	21.9	21.6	22.6	21.8	20.1	22.9	22.5	22	20.5	21.9
Avg Spread	18.0	15.7	15.2	16.0	16.9	16.9	16.3	17.5	16.3	16.0	16.7	16.5

Harvest Summary v4

Date 10/6/2016

*** WARD LAKE ***

Club Number '1408'

Table 9. Trophy Buck Harvest History

	2015	2014	2013	2012	2011	2010	2009	2008	2007	2006	B 2014	Club Avg
Bucks	7	13	14	30	13	25	20	11	17	12	2240	16
Acres/Buck	927	499	464	216	499	260	324	491	318	450	124	380
% .5 Bucks	0	54	21	13	15	12	5	9	29	0	4.42	16.05
# .5 Bucks	0	7	3	4	2	3	1	1	5	0	99	2.6
Avg Weight	0	80	68	71	90	72	90	80	68	0	68	75
% 1.5 Bucks	0	15	0	17	0	8	5	27	0	33	3	10.5
# 1.5 Bucks	0	2	0	5	0	2	1	3	0	4	62	1.7
% Spikes	0	0	0	0	0	100	100	100	0	100	83	59
Avg Weight	0	153	0	145	0	115	125	127	0	128	107	134
Avg Points	0.0	5.5	0.0	5.8	0.0	2.0	2.0	2.0	0.0	1.8	3	3
Avg Base	0.0	2.8	0.0	2.8	0.0	0.0	0.0	0.0	0.0	2.3	2.3	2.6
Avg Length	0	12.8	0	10.2	0	0	0	9.4	0	8.2	6.3	10.1
Avg Spread	0.0	10.2	0.0	8.5	0.0	0.0	0.0	0.0	0.0	0.0	7.1	9.0
% 2.5 Bucks	14	15	29	20	8	4	30	0	6	17	6	14.8
# 2.5 Bucks	1	2	4	6	1	1	6	0	1	2	139	2.4
Avg Weight	155	203	176	183	175	155	164	0	190	155	172	174
Avg Points	9.0	8.0	7.8	8.0	8.0	9.0	6.7	0.0	8.0	7.5	8	8
Avg Base	3.4	3.8	3.9	3.5	3.3	3.8	3.7	0.0	5.1	2.9	3.7	3.7
Avg Length	16.9	18.5	16.7	18.8	15.9	16.4	16.8	0	23.7	18.3	17.4	17.8
Avg Spread	14.6	15.4	14.5	15.7	11.8	13.3	13.6	0.0	14.5	13.4	14.1	14.4
% 3.5 Bucks	0	8	36	40	38	36	45	36	35	17	18.3	33
# 3.5 Bucks	0	1	5	12	5	9	9	4	6	2	409	5
Avg Weight	0	190	209	207	193	187	212	206	200	208	185	202
Avg Points	0.0	10.0	8.4	8.4	8.4	8.6	9.1	10.5	9.7	7.5	8	9
Avg Base	0.0	5.0	4.5	4.4	4.4	4.1	4.9	4.8	4.3	4.4	4.2	4.5
Avg Length	0	24.5	20.2	20.9	20.6	21	20.8	21.6	23.1	23.5	19.2	21.3
Avg Spread	0.0	18.8	15.6	15.8	16.6	15.8	15.6	18.7	16.6	15.6	15.6	16.2
% 4.5+ Bucks	86	8	14	10	38	40	15	27	29	33	47	25.9
# 4.5+ Bucks	6	1	2	3	5	10	3	3	5	4	1045	4.2
Avg Weight	222	225	210	230	216	191	175	182	202	204	196	203
Avg Points	11.7	8.0	9.5	8.3	10.2	9.4	8.7	9.0	9.6	7.3	8	9
Avg Base	5.1	5.1	4.6	5.0	4.6	4.4	4.4	4.7	4.5	4.6	4.6	4.7
Avg Length	23.5	20.4	23.7	22.3	22.6	21.8	20.1	22.9	22.5	22	20.9	22.3
Avg Spread	18.1	16.8	16.9	15.9	16.9	16.9	16.3	17.5	16.3	16.0	17.0	16.9

Harvest Summary v4

Date 10/6/2016

*** WARD LAKE ***

Club Number '1408'

Table 10. Managemet Buck Harvest History

	2015	2014	2013	2012	2011	2010	2009	2008	2007	2006	B 2014	Club Avg
Bucks	14	11	11	13	0	0	0	0	0	0	2240	5
Acres/Buck	464	590	590	499	0	0	0	0	0	0	124	1258
% .5 Bucks	0	0	0	0	0	0	0	0	0	0	0	0
# .5 Bucks	0	0	0	0	0	0	0	0	0	0	0	0
Avg Weight	0	0	0	0	0	0	0	0	0	0	0	0
% 1.5 Bucks	36	9	18	15	0	0	0	0	0	0	2	20.4
# 1.5 Bucks	5	1	2	2	0	0	0	0	0	0	40	1
% Spikes	100	100	100	100	0	0	0	0	0	0	98	100
Avg Weight	118	135	131	138	0	0	0	0	0	0	111	126
Avg Points	2.0	2.0	2.0	2.0	0.0	0.0	0.0	0.0	0.0	0.0	2	2
Avg Base	0.0	0.0	1.4	0.0	0.0	0.0	0.0	0.0	0.0	0.0	1.8	1.4
Avg Length	3.1	3.8	3	0	0	0	0	0	0	0	4.0	3.2
Avg Spread	0.0	0.0	3.9	0.0	0.0	0.0	0.0	0.0	0.0	0.0	4.4	3.9
% 2.5 Bucks	36	9	9	54	0	0	0	0	0	0	3	28.6
# 2.5 Bucks	5	1	1	7	0	0	0	0	0	0	59	1.4
Avg Weight	176	175	155	174	0	0	0	0	0	0	148	173
Avg Points	5.6	5.0	4.0	5.6	0.0	0.0	0.0	0.0	0.0	0.0	4	5
Avg Base	3.4	3.4	3.5	3.2	0.0	0.0	0.0	0.0	0.0	0.0	3.0	3.3
Avg Length	16.9	16.6	14.8	15.7	0	0	0	0	0	0	13.2	16.1
Avg Spread	14.4	12.1	11.3	13.9	0.0	0.0	0.0	0.0	0.0	0.0	11.2	13.7
% 3.5 Bucks	21	27	36	23	0	0	0	0	0	0	4.4	27
# 3.5 Bucks	3	3	4	3	0	0	0	0	0	0	98	1
Avg Weight	217	188	198	195	0	0	0	0	0	0	180	200
Avg Points	7.7	6.3	7.0	6.7	0.0	0.0	0.0	0.0	0.0	0.0	6	7
Avg Base	4.2	3.9	4.0	4.0	0.0	0.0	0.0	0.0	0.0	0.0	3.8	4.0
Avg Length	22.1	17.7	18.8	20.5	0	0	0	0	0	0	16.8	19.7
Avg Spread	19.6	13.5	15.9	17.0	0.0	0.0	0.0	0.0	0.0	0.0	13.8	16.5
% 4.5+ Bucks	7	55	36	8	0	0	0	0	0	0	16	24.5
# 4.5+ Bucks	1	6	4	1	0	0	0	0	0	0	356	1.2
Avg Weight	185	200	229	205	0	0	0	0	0	0	198	210
Avg Points	8.0	7.0	8.3	7.0	0.0	0.0	0.0	0.0	0.0	0.0	7	8
Avg Base	4.0	4.3	4.3	4.8	0.0	0.0	0.0	0.0	0.0	0.0	4.3	4.3
Avg Length	19.4	20.6	21	19.5	0	0	0	0	0	0	19.3	20.6
Avg Spread	17.0	15.5	14.4	16.4	0.0	0.0	0.0	0.0	0.0	0.0	15.7	15.3