

WARD LAKE DUCK HUNTING RULES

2017-2018 Season

YOUTH ONLY SEASON DATES:

November 18, 2017

February 3, 2018

REGULAR SEASON DATES:

November 24 – November 26, 2017

December 1 – December 3, 2017

December 6, 2017 – January 28, 2018

The **Duck Project** (101-108, see map) will be open on **Tuesdays, Thursdays, Saturdays and Sundays.**

All **Other Locations** (201-205, see map) will be open **every legal hunting day.**

- Humber's Cypress Hole (201)
- Saw Mill Hole (202)
- Borrow pits on the Levee Board property (North 203, South 204)
- Bee Lake (205)

In addition to the normal hunting days, the **Duck Project** will be open on the following:

- Friday, November 24, 2017
- Friday, December 1, 2017
- Wednesday, December 6, 2017
- Monday, January 1, 2018
- Monday, January 15, 2018

Shooting hours will be from thirty minutes before sunrise until **12:00 noon**, except for the last two days of the season, when shooting time will end at the legal sunset shooting hours.

Each membership may have up to 3 guests. The member must be with their guests at all times. In the event that a member has more than 3 guests, they may still hunt together, but they can only use 4 guns and can only kill 4 limits per membership.

Drawing for hunting locations will take place at the skinning rack at exactly **6:00 P.M.** on the night before each hunting day. Regardless of how many parties are hunting, the draw will occur using a deck of cards to determine the order of choosing locations. If a shareholder or someone having a financial interest in the LLC cannot be present at the draw, he or she may have someone at the draw to represent them but the member must hunt with the party. Members who have missed the draw, and children of members, may select any spot which has not been taken **any time after the draw at 6:00 p.m.** as long as it is prior to hunting.

ALL HUNTING PARTIES MUST SIGN IN AT SKINNING RACK PRIOR TO HUNTING!!!

We are doing an observation log again this year, as recommended by the waterfowl biologist, to try to help us keep improving the habitat. The observation book will be at the skinning rack and one member from each hunting party is asked to fill out after each hunt. However, if you already keep a personal log book and you would prefer to wait to transfer your records of each hunt until the end of the season, then that is fine as long as you get it to Scott Flowers by February 15th.

For any questions surrounding the draw or other matters, please contact Scott Flowers. (662) 902-4621

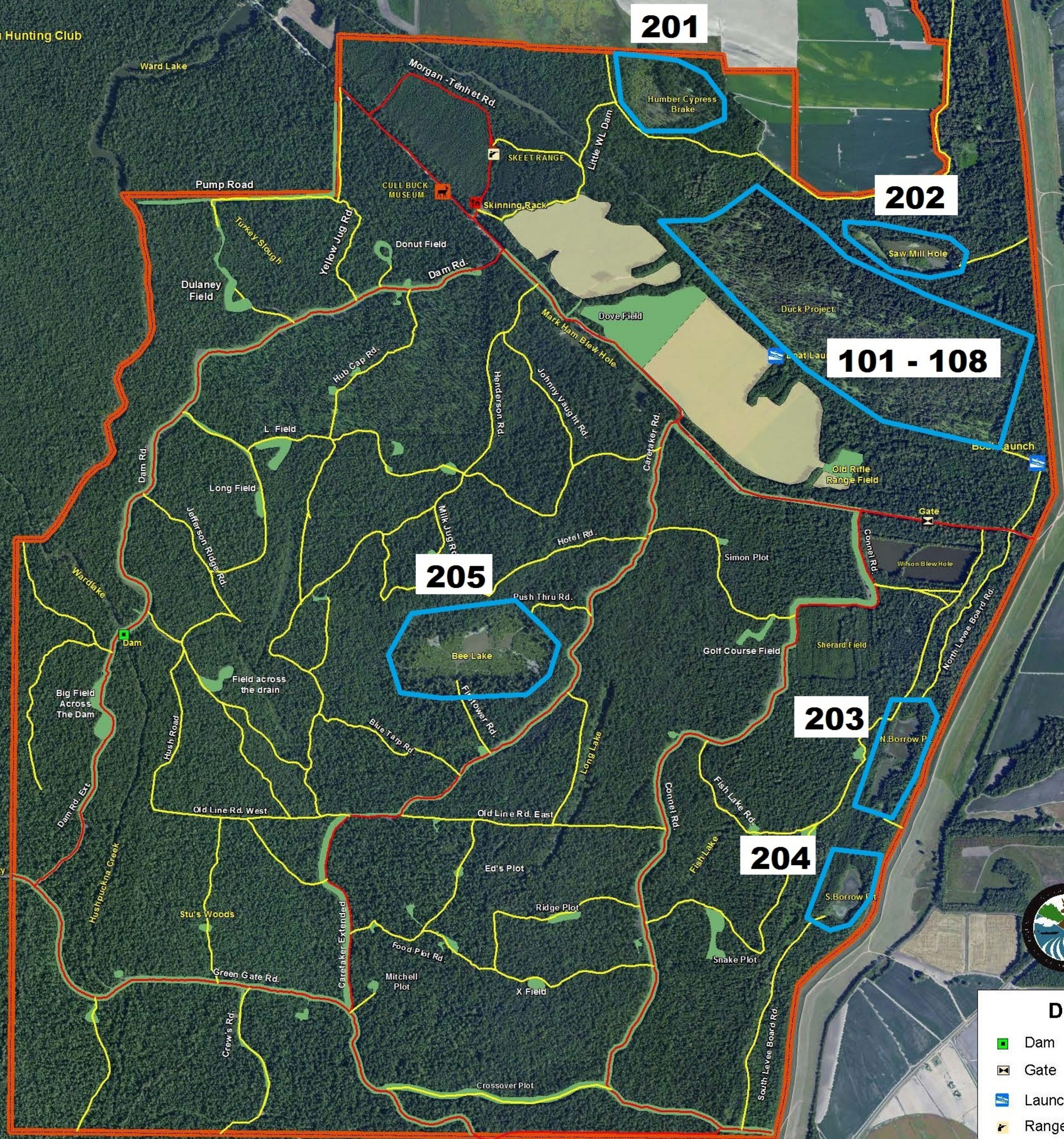
Please use the following to access various locations for duck hunting:

- Borrow Pit North: The levee board road south of main gravel road to the north end of borrow pit or green gate on main levee
- Borrow Pit South: The green gate on the main levee. Please do not use south levee board road.
- Bee Lake: The 4-wheeler trail from food plot near ATCO line or the Push-thru road prior to ATCO line off of Caretaker.

Please remember to be courteous of deer hunters and **REFRAIN** from driving roads during main hunting hours (6:00am-10:00am, & 2:00pm-dark).

Ward Lake Duck Hunting Locations

Bland's Bayou Hunting Club



- DES**
- Dam
 - ⊠ Gate
 - ▶ Launch
 - ▭ Range
 - Shed

Ward Lake Duck Project

101

102

103

104

105

107

106

108