

# **Ward Lake Hunting Club**



## **Deer Harvest Recommendations 2015 – 2016**



**Ward Lake Hunting Club**  
**2014 – 2015 Deer Season Harvest Report**  
**&**  
**2015 – 2016 Deer Harvest Recommendations**



Following is the 2014 DMAP harvest report for Ward Lake Hunting Club. The club did an excellent job on data collection for the 2014 – 2015 hunting season. Jawbones and harvest data were submitted for all deer except for one doe. Good job!

The following are included in the report:

1. Season narrative
2. Hunter observation data summary
3. Deer harvest recommendations
4. Deer harvest data summary
5. Hunter observation table and graph
6. September 2015 camera survey top bucks (preliminary photos)

### **2014 – 2015 Season Narrative**

During the 2014 – 2015 hunting season, 24 bucks and 66 does were harvested on Ward Lake Hunting Club. The doe harvest was the highest since 1993. The doe harvest recommendation was 60. The club has done a very good job following harvest recommendations. Continue the good work!

The club harvested 11 management bucks during the 2014 – 2015 season. The club should continue the aggressive harvest of management bucks to decrease the number of lower quality, mature bucks in the herd. Additionally, seven buck fawns, two 1.5 year old bucks, two 2.5 year old bucks, and one 3.5 year old bucks were harvested that should have been protected under the current management goal.

Biological parameters (body weights, age structure, lactation rates, and antler size) indicate a prolific and healthy deer herd. Most biological parameters were average or above average for the 2014 – 2015 season.

### **Hunter Observation Data**

Deer observed per hour was the highest since 2007 (1.7 deer/hour). Observation data indicates a balanced buck:doe. Fawn recruitment was a historical high for the 2014 – 2015 season. The number of observed bucks having 8 or more antler points continued to exhibit an increasing trend.

### **Habitat**

Timber management and supplemental plantings have been very good over the past several years on Ward Lake Hunting Club. Recent timber thinnings has increased deer carrying capacity on the property. As a result, supplemental plantings are currently being evaluated and adjusted based on current habitat conditions.

During much of Summer 2015, a large portion of Ward Lake Hunting Club was flooded. This resulted in many deer being pushed towards the north end of the property or dispersing off of the property. However, browse growth responded well after flood waters receded, and deer quickly returned to the property.

### **Deer Harvest Recommendations for the 2015 – 2016 Hunting Season**

Due to an increase in available deer browse that resulted from recent timber thinnings, a decrease in doe harvest is recommended. Ward Lake Hunting Club should continue the aggressive harvest of management bucks. For the previous three hunting seasons, the club has protected most quality bucks from harvest, and this has helped to improve the quality of the buck standing crop. Currently, a camera survey is being conducted on the Ward Lake Hunting Club to evaluate buck age structure and quality. Buck harvest recommendations will be provided once the camera survey is completed in September.

Following are deer harvest recommendations for the 2015 – 2016 hunting season:

- 50 Does
- Management Bucks – criteria to be set after completion of camera survey
- Trophy Bucks – criteria to be set after completion of camera survey

# **Harvest Summary & Observation Data**

# Harvest Summary v4

Date 8/27/2015

\*\*\* WARD LAKE \*\*\*

Club Number '1408'

2014 Season

County = Coahoma  
Soil Region = Batture  
State = MS

Biologist = Chris McDonald

Acres = 6489  
Years on DMAP = 24  
% Data Collected = 98.9

Table 1. Harvest Summary

	Number Harvested	Acres/ Deer Harvested
Bucks	24	270
Does	66	98
Totals	90	72

Table 2. Harvest History

	2014	2013	2012	2011	2010	2009	2008	2007	2006	2005	B 2013	Club Avg
Acres	6489	6489	6489	6489	6489	6489	5400	5400	5400	5400	252865	6053
<b>Total Deer</b>	90	87	93	47	71	61	37	58	58	84	4568	69
Bucks	24	27	43	13	25	22	11	17	12	25	1736	22
Does	66	60	50	34	46	39	26	41	46	59	2832	47
<b>Acres/Deer</b>	72	75	70	138	91	106	146	93	93	64	55	88
Bucks	270	240	151	499	260	295	491	318	450	216	146	276
Does	98	108	130	191	141	166	208	132	117	92	89	130

Table 3. Age Distribution

Age	Bucks		Does		Management Bucks		Criteria Bucks	
	Num	%	Num	%	Num	%	Num	%
0.5	7	29	3	5	0	0	7	54
1.5	3	12	18	28	1	9	2	15
2.5	3	12	24	37	1	9	2	15
3.5	4	17	11	17	3	27	1	8
4.5	2	8	6	9	1	9	1	8
5.5	0	0	1	2	0	0	0	0
6.5	1	4	2	3	1	9	0	0
7.5	2	8	0	0	2	18	0	0
8.5+	2	8	0	0	2	18	0	0
Totals	24		65		11		13	

# Harvest Summary v4

Date 8/27/2015

\*\*\* WARD LAKE \*\*\*

Club Number '1408'

Table 4. Statistics for Doe Harvest

Age	Number Harvested	Average Live Weight	Percent Lactating
0.5	3	72	0
1.5	18	113	0
2.5	24	122	54
3.5	11	132	73
4.5	6	131	67
5.5	1	135	100
6.5	2	120	50
7.5	0	0	0
8.5+	0	0	0
Totals	65	120	

Table 5. Doe Harvest History

	2014	2013	2012	2011	2010	2009	2008	2007	2006	2005	B 2013	Club Avg
Does	65	48	50	34	46	39	26	40	46	59	2832	45
Acres/Doe	100	135	130	191	141	166	208	135	117	92	89	134
Doe Age-Wgt												
% 0.5	5	12	12	6	7	15	15	12	22	17	6	12
% 1.5	28	25	14	26	20	26	31	22	11	22	29	22
% 2.5	37	27	28	15	11	31	12	18	15	14	25	22
% 3.5+	31	35	46	53	63	28	42	48	52	47	50	44
Wght 0.5	72	75	72	68	54	61	65	77	68	67	66	68
Wght 1.5	113	112	116	118	99	114	121	108	109	107	100	112
Wght 2.5	122	124	128	127	112	124	125	126	127	117	113	123
Wght 3.5+	131	133	131	138	121	133	141	126	135	126	120	131
% Lactation												
1.5	0	9	14	0	0	0	0	33	20	23	9	9
2.5	54	46	64	75	20	75	100	100	43	63	54	61
2.5+	61	59	70	64	47	68	57	81	48	58	62	61
3.5+	70	69	74	61	52	60	45	74	50	57	66	61

# Harvest Summary v4

Date 8/27/2015

\*\*\* WARD LAKE \*\*\*

Club Number '1408'

Table 6. Statistics for Yearling Bucks

	Number	Percent	Avg. Live Weight	Average Points
Spikes	1	33	135	2.0
Forks	2	67	153	5.5
Totals	3			

Table 7. Buck Statistics

Age	Live Weight		Points		Base		Length		Spread	
	Num	Avg	Num	Avg	Num	Avg	Num	Avg	Num	Avg
0.5	7	80	7	0.0	7	0.0	7	0	7	0.0
1.5	3	147	3	4.3	3	2.8	3	9.8	3	10.2
2.5	3	193	3	7.0	3	3.7	3	17.9	3	14.3
3.5	4	189	4	7.3	4	4.1	4	19.4	4	14.8
4.5	2	225	2	8.5	2	4.6	2	20.8	2	15.6
5.5	0	0	0	0.0	0	0.0	0	0	0	0.0
6.5	1	205	1	7.0	1	4.8	1	23.8	1	18.4
7.5	2	210	2	7.0	2	4.6	2	19.9	2	16.3
8.5+	2	188	2	6.0	2	3.8	2	19.5	2	13.9

# Harvest Summary v4

Date 8/27/2015

\*\*\* WARD LAKE \*\*\*

Club Number '1408'

Table 8. Buck Harvest History (All Bucks)

	2014	2013	2012	2011	2010	2009	2008	2007	2006	2005	B 2013	Club Avg
Bucks	24	25	43	13	25	20	11	17	12	25	1736	22
Acres/Buck	270	260	151	499	260	324	491	318	450	216	146	282
% .5 Bucks	29	12	9	15	12	5	9	29	0	8	3.8	13.02
# .5 Bucks	7	3	4	2	3	1	1	5	0	2	66	2.8
Avg Weight	80	68	71	90	72	90	80	68	0	63	67	74
% 1.5 Bucks	12	8	16	0	8	5	27	0	33	16	6	12.1
# 1.5 Bucks	3	2	7	0	2	1	3	0	4	4	99	2.6
% Spikes	33	100	29	0	100	100	100	0	100	100	90	73
Avg Weight	147	131	143	0	115	125	127	0	128	129	116	133
Avg Points	4.3	2.0	4.7	0.0	2.0	2.0	2.0	0.0	1.8	2.0	2	3
Avg Base	2.8	1.4	2.8	0.0	0.0	0.0	0.0	0.0	2.3	0.0	2.1	2.5
Avg Length	9.8	3	10.2	0	0	0	9.4	0	8.2	0	6.2	8.6
Avg Spread	10.2	3.9	8.5	0.0	0.0	0.0	0.0	0.0	0.0	0.0	6.2	8.4
% 2.5 Bucks	12	20	30	8	4	30	0	6	17	4	7	15.3
# 2.5 Bucks	3	5	13	1	1	6	0	1	2	1	129	3.3
Avg Weight	193	172	178	175	155	164	0	190	155	145	164	173
Avg Points	7.0	7.0	6.7	8.0	9.0	6.7	0.0	8.0	7.5	7.0	7	7
Avg Base	3.7	3.8	3.3	3.3	3.8	3.7	0.0	5.1	2.9	3.2	3.6	3.5
Avg Length	17.9	16.3	17.1	15.9	16.4	16.8	0	23.7	18.3	11.9	16.3	17.0
Avg Spread	14.3	13.8	14.7	11.8	13.3	13.6	0.0	14.5	13.4	11.9	13.6	14.0
% 3.5 Bucks	17	36	35	38	36	45	36	35	17	32	24.1	33
# 3.5 Bucks	4	9	15	5	9	9	4	6	2	8	419	7
Avg Weight	189	204	205	193	187	212	206	200	208	193	185	200
Avg Points	7.3	7.8	8.1	8.4	8.6	9.1	10.5	9.7	7.5	8.8	8	9
Avg Base	4.1	4.3	4.3	4.4	4.1	4.9	4.8	4.3	4.4	4.3	4.6	4.4
Avg Length	19.4	19.6	20.8	20.6	21	20.8	21.6	23.1	23.5	21.4	19.2	21.0
Avg Spread	14.8	15.8	16.1	16.6	15.8	15.6	18.7	16.6	15.6	15.8	15.8	16.0
% 4.5+ Bucks	29	24	9	38	40	15	27	29	33	40	65	26.5
# 4.5+ Bucks	7	6	4	5	10	3	3	5	4	10	1131	5.7
Avg Weight	204	225	224	216	191	175	182	202	204	194	197	201
Avg Points	7.1	8.7	8.0	10.2	9.4	8.7	9.0	9.6	7.3	8.7	8	9
Avg Base	4.4	4.4	5.0	4.6	4.4	4.4	4.7	4.5	4.6	4.4	4.6	4.5
Avg Length	20.6	21.9	21.6	22.6	21.8	20.1	22.9	22.5	22	22.7	20.7	21.9
Avg Spread	15.7	15.2	16.0	16.9	16.9	16.3	17.5	16.3	16.0	17.5	16.8	16.5



# Harvest Summary v4

Date 8/27/2015

\*\*\* WARD LAKE \*\*\*

Club Number '1408'

Table 9. Trophy Buck Harvest History

	2014	2013	2012	2011	2010	2009	2008	2007	2006	2005	B 2013	Club Avg
Bucks	13	14	30	13	25	20	11	17	12	25	1736	18
Acres/Buck	499	464	216	499	260	324	491	318	450	216	146	336
% .5 Bucks	54	21	13	15	12	5	9	29	0	8	3.74	15.56
# .5 Bucks	7	3	4	2	3	1	1	5	0	2	65	2.8
Avg Weight	80	68	71	90	72	90	80	68	0	63	65	74
% 1.5 Bucks	15	0	17	0	8	5	27	0	33	16	4	11.7
# 1.5 Bucks	2	0	5	0	2	1	3	0	4	4	64	2.1
Avg Weight	80	68	71	90	72	90	80	68	0	63	65	74
% Spikes	0	0	0	0	100	100	100	0	100	100	84	67
Avg Weight	153	0	145	0	115	125	127	0	128	129	111	133
Avg Points	5.5	0.0	5.8	0.0	2.0	2.0	2.0	0.0	1.8	2.0	2	3
Avg Base	2.8	0.0	2.8	0.0	0.0	0.0	0.0	0.0	2.3	0.0	2.3	2.6
Avg Length	12.8	0	10.2	0	0	0	9.4	0	8.2	0	7.6	10.1
Avg Spread	10.2	0.0	8.5	0.0	0.0	0.0	0.0	0.0	0.0	0.0	6.8	9.0
% 2.5 Bucks	15	29	20	8	4	30	0	6	17	4	6	13.3
# 2.5 Bucks	2	4	6	1	1	6	0	1	2	1	96	2.4
Avg Weight	203	176	183	175	155	164	0	190	155	145	165	174
Avg Points	8.0	7.8	8.0	8.0	9.0	6.7	0.0	8.0	7.5	7.0	8	8
Avg Base	3.8	3.9	3.5	3.3	3.8	3.7	0.0	5.1	2.9	3.2	3.7	3.6
Avg Length	18.5	16.7	18.8	15.9	16.4	16.8	0	23.7	18.3	11.9	17.2	17.6
Avg Spread	15.4	14.5	15.7	11.8	13.3	13.6	0.0	14.5	13.4	11.9	14.1	14.3
% 3.5 Bucks	8	36	40	38	36	45	36	35	17	32	21	34
# 3.5 Bucks	1	5	12	5	9	9	4	6	2	8	364	6
Avg Weight	190	209	207	193	187	212	206	200	208	193	184	201
Avg Points	10.0	8.4	8.4	8.4	8.6	9.1	10.5	9.7	7.5	8.8	8	9
Avg Base	5.0	4.5	4.4	4.4	4.1	4.9	4.8	4.3	4.4	4.3	4.7	4.5
Avg Length	24.5	20.2	20.9	20.6	21	20.8	21.6	23.1	23.5	21.4	19.4	21.3
Avg Spread	18.8	15.6	15.8	16.6	15.8	15.6	18.7	16.6	15.6	15.8	15.8	16.1
% 4.5+ Bucks	8	14	10	38	40	15	27	29	33	40	54	25.6
# 4.5+ Bucks	1	2	3	5	10	3	3	5	4	10	939	4.6
Avg Weight	225	210	230	216	191	175	182	202	204	194	197	199
Avg Points	8.0	9.5	8.3	10.2	9.4	8.7	9.0	9.6	7.3	8.7	9	9
Avg Base	5.1	4.6	5.0	4.6	4.4	4.4	4.7	4.5	4.6	4.4	4.6	4.5
Avg Length	20.4	23.7	22.3	22.6	21.8	20.1	22.9	22.5	22	22.7	20.9	22.2
Avg Spread	16.8	16.9	15.9	16.9	16.9	16.3	17.5	16.3	16.0	17.5	16.9	16.8

# Harvest Summary v4

Date 8/27/2015

\*\*\* WARD LAKE \*\*\*

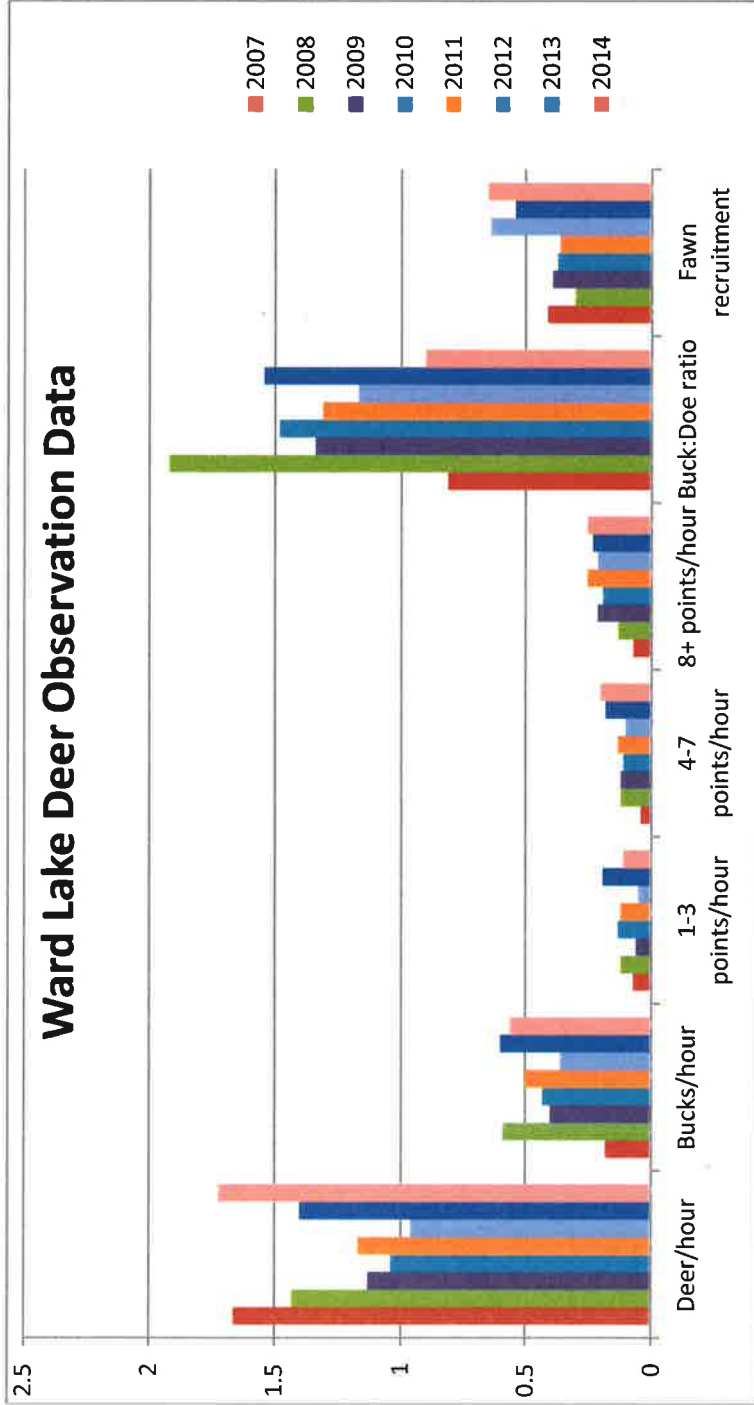
Club Number '1408'

Table 10. Managment Buck Harvest History

	2014	2013	2012	2011	2010	2009	2008	2007	2006	2005	B 2013	Club Avg
Bucks	11	11	13	0	0	0	0	0	0	0	1736	4
Acres/Buck	590	590	499	0	0	0	0	0	0	0	146	1730
% .5 Bucks	0	0	0	0	0	0	0	0	0	0	0.06	0
# .5 Bucks	0	0	0	0	0	0	0	0	0	0	1	0
Avg Weight	0	0	0	0	0	0	0	0	0	0	175	0
% 1.5 Bucks	9	18	15	0	0	0	0	0	0	0	2	14.3
# 1.5 Bucks	1	2	2	0	0	0	0	0	0	0	35	0.5
% Spikes	100	100	100	0	0	0	0	0	0	0	100	100
Avg Weight	135	131	138	0	0	0	0	0	0	0	126	134
Avg Points	2.0	2.0	2.0	0.0	0.0	0.0	0.0	0.0	0.0	0.0	2	2
Avg Base	0.0	1.4	0.0	0.0	0.0	0.0	0.0	0.0	0.0	0.0	1.9	1.4
Avg Length	3.8	3	0	0	0	0	0	0	0	0	5.2	3.3
Avg Spread	0.0	3.9	0.0	0.0	0.0	0.0	0.0	0.0	0.0	0.0	5.6	3.9
% 2.5 Bucks	9	9	54	0	0	0	0	0	0	0	2	25.7
# 2.5 Bucks	1	1	7	0	0	0	0	0	0	0	33	0.9
Avg Weight	175	155	174	0	0	0	0	0	0	0	161	172
Avg Points	5.0	4.0	5.6	0.0	0.0	0.0	0.0	0.0	0.0	0.0	5	5
Avg Base	3.4	3.5	3.2	0.0	0.0	0.0	0.0	0.0	0.0	0.0	3.1	3.2
Avg Length	16.6	14.8	15.7	0	0	0	0	0	0	0	13.6	15.7
Avg Spread	12.1	11.3	13.9	0.0	0.0	0.0	0.0	0.0	0.0	0.0	12.0	13.4
% 3.5 Bucks	27	36	23	0	0	0	0	0	0	0	3.2	29
# 3.5 Bucks	3	4	3	0	0	0	0	0	0	0	55	1
Avg Weight	188	198	195	0	0	0	0	0	0	0	190	194
Avg Points	6.3	7.0	6.7	0.0	0.0	0.0	0.0	0.0	0.0	0.0	7	7
Avg Base	3.9	4.0	4.0	0.0	0.0	0.0	0.0	0.0	0.0	0.0	3.9	3.9
Avg Length	17.7	18.8	20.5	0	0	0	0	0	0	0	18.0	19.0
Avg Spread	13.5	15.9	17.0	0.0	0.0	0.0	0.0	0.0	0.0	0.0	15.3	15.5
% 4.5+ Bucks	55	36	8	0	0	0	0	0	0	0	11	31.4
# 4.5+ Bucks	6	4	1	0	0	0	0	0	0	0	192	1.1
Avg Weight	200	229	205	0	0	0	0	0	0	0	200	212
Avg Points	7.0	8.3	7.0	0.0	0.0	0.0	0.0	0.0	0.0	0.0	7	7
Avg Base	4.3	4.3	4.8	0.0	0.0	0.0	0.0	0.0	0.0	0.0	4.4	4.3
Avg Length	20.6	21	19.5	0	0	0	0	0	0	0	19.9	20.7
Avg Spread	15.5	14.4	16.4	0.0	0.0	0.0	0.0	0.0	0.0	0.0	16.3	15.2

## Ward Lake Deer Observation Data

	2007	2008	2009	2010	2011	2012	2013	2014
<b>Deer/hour</b>	1.66	1.43	1.13	1.04	1.17	0.96	1.40	1.72
<b>Bucks/hour</b>	0.18	0.59	0.4	0.43	0.5	0.36	0.6	0.56
<b>1-3 points/hour</b>	0.07	0.12	0.06	0.13	0.12	0.05	0.19	0.11
<b>4-7 points/hour</b>	0.04	0.12	0.12	0.11	0.13	0.1	0.18	0.2
<b>8+ points/hour</b>	0.07	0.13	0.21	0.19	0.25	0.21	0.23	0.25
<b>Buck:Doe ratio</b>	0.81	1.92	1.34	1.48	1.31	1.17	1.54	0.9
<b>Fawn recruitment</b>	0.41	0.3	0.39	0.37	0.36	0.64	0.54	0.65
<b>Total Observation Hours</b>	1047	941	1064	1027	915	967	400.5	915



**September 2015**

**Camera Survey**

**Top Bucks**



Curbie track  
Photo

9/9/2015 3:00 AM

Arms



Cudds Back

9/06/2015 2:37 AM





9/07/2015 4:21 AM





Cuddeback  
Digital

9/6/2015 1:06 AM

Attack



9/09/2015 10:27 PM



Cuddeback  
Cuddeback

9/8/2015 2:50 AM



Cuntle track  
Camera

9/11/2015 5:56 AM

Attack



Cuttle track  
PHOTOGRAPHY

9/6/2015 5:03 AM

Attack





9F 06:06:01PM 08/13/2015 0977



Cuddle back

9/06/2015 2:58 AM





Cuddles back

9/07/2015 2:20 AM



Cuddeback  
Dynamics

9/10/2015 3:28 AM

Attack





Cuddeback  
Camera

9/9/2015 2:46 AM ID:501







9/06/2015 9:48 PM







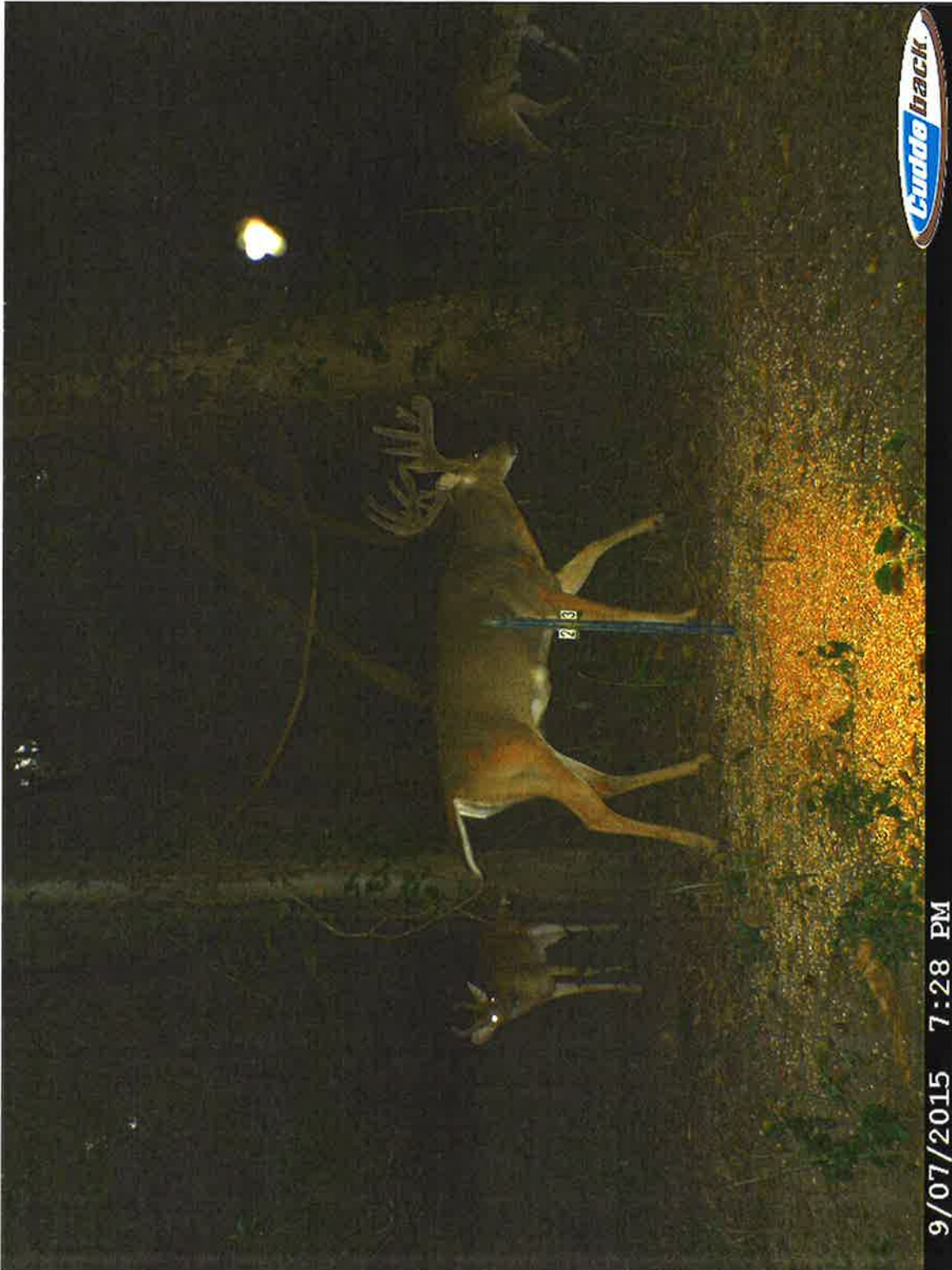
CuddleTrack  
Camera

9/9/2015 5:23 AM ID:502









Cuddo back

9/07/2015 7:28 PM



Cutler Track  
Photo

9/10/2015 5:34 AM

Attack